



BIOLEAF

CLEANING WHICH **PROTECTS YOU**



SELECTED AS PRODUCT OF THE YEAR 2026 IN SPAIN

*SURVEY OF 10,011 INDIVIDUALS FROM THE NETQUEST PANEL + PRODUCT TEST ON 100 PEOPLE THROUGH SAMPLIA IN OCTOBER 2025.

* TABLE OF CONTENTS.

1. About us
2. The current cleaning problem
3. Why Bioleaf
4. Product range
5. Our target customer
6. Our conquest plan
7. Shall we chat?

* ABOUT US

Please allow for the introductions.

We are Laboratorios Vinfer, a Spanish company with more than 50 years of experience in the manufacture and formulation of household products field





THE CURRENT CLEANING PROBLEM



THE CURRENT CLEANING PROBLEM



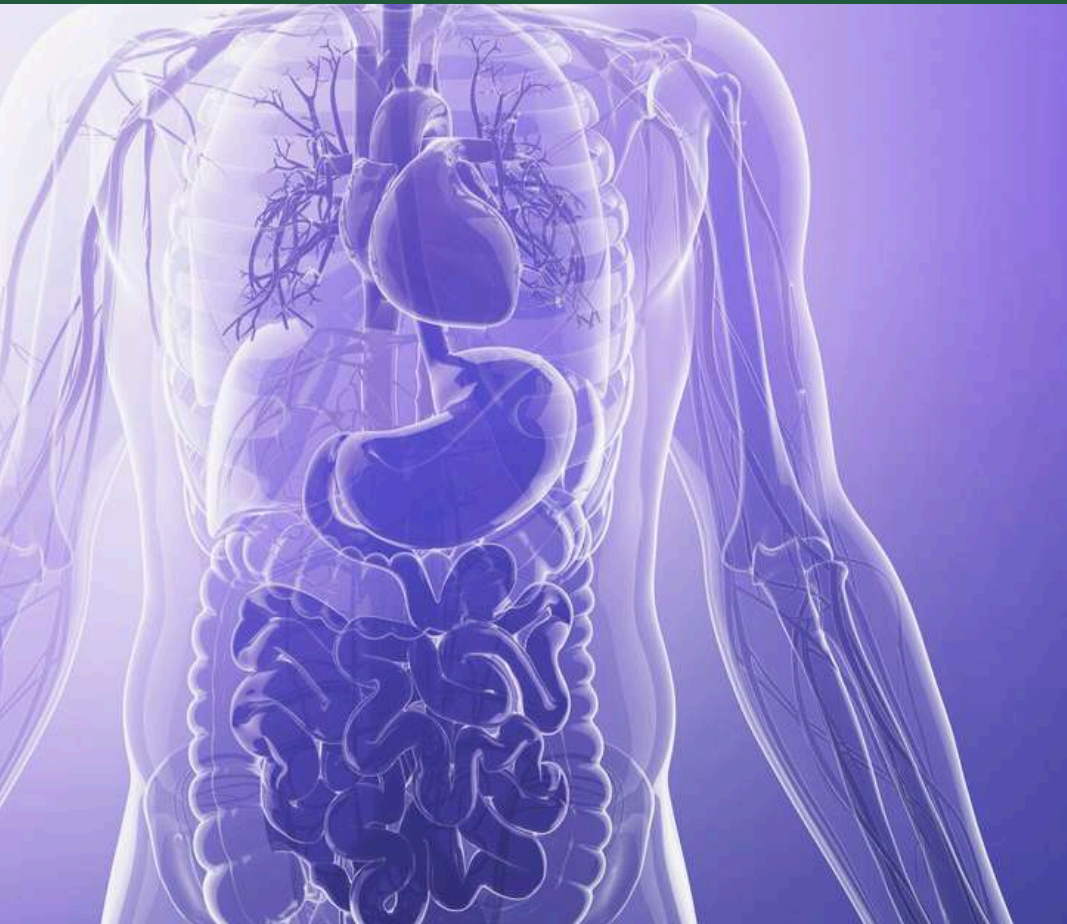
The current cleaning situation only gives us the choice between conventional products or, failing that, eco-friendly products, but the latter are still in many cases **corrosive** and **harmful to one's skin**.

* THE CURRENT CLEANING PROBLEM

Just because a cleaner is labeled “Eco” or has Ecolabel Certification, in no way means that it has **no hazard warnings**.



* **THE CURRENT
CLEANING PROBLEM**



Today's consumers are seeking to stay away from harmful substances in their homes, by choosing the most **environmentally friendly** product options on the market, in both cleaning and food.

 **WHY BIOLEAF**

* WHY BIOLEAF



This is how Bioleaf was created, a new cleaning concept with a range of 6 household products with **proven effectiveness, biodegradable and dermatologically tested**, among many other characteristics.

* **WHY BIOLEAF**

**PATENTED FORMULAS
UNIQUE IN THE MARKET**

Our formulas are **patented in Europe**, being unique in the market in terms of sustainability, innovation and quality.





WHY BIOLEAF



DERMATOLOGICALLY TESTED RESPECTFUL WITH YOU AND YOUR LOVED ONES

Cleaning as a family is no longer a dangerous task. In the past, only cosmetic products were dermatologically tested.

Revolutionising the cleaning scene by creating **products which respect one's skin and that of your loved ones.**

* **WHY BIOLEAF**

BIODEGRADABLE FORMULAS
ENVIRONMENTALLY FRIENDLY

Its formulas with natural original ingredients are classified as **biodegradable**, being environmentally friendly and sustainable once the product's life cycle is over.



* **WHY BIOLEAF**



NO HAZARD CLASSIFICATIONS
NO PICTOGRAMS

Due to their safety, Bioleaf products **are not classified as hazardous** materials of any kind, reason why there are no hazard/CLP pictograms on their labelling.

This making transport and logistics much easier.

* WHY BIOLEAF

NO ENDOCRINE DISRUPTORS

RESPECT YOUR HEALTH

Many conventional cleaners contain chemicals such as **synthetic fragrances, phthalates, or preservatives** that can act as endocrine disruptors, interfering with the body's hormonal balance.

Bioleaf does not contain **any ingredients classified as endocrine disruptors.**

PROVEN EFFECTIVENESS AGAINST MARKET-LEADING CLEANERS

All products in the Bioleaf range have been **tested for efficacy and effectiveness against market-leading conventional cleaning products,** obtaining **above-average results.**

* **WHY BIOLEAF**

**BREAKING DOWN PRECONCEPTIONS.
SUSTAINABLE
DOES CLEAN.**



 **PRODUCT RANGE**



KITCHENS *

DEGREASER

Removes the most stubborn and encrusted grease. Can be used for cleaning all types of surfaces which are not water-damaged.

- **DIRECT USE**
- KITCHENS | OVENS | RANGE HOODS**
- * **750ML**



CITRUS NOTES



DISHWASHER

Removes the toughest grease and dirt from all types of dishes. Cleans, degreases and adds shine, without leaving marks or residue.

- **DIRECT USE**
- CUTLERY | HOUSEHOLD GOODS**
- * **750ML**



BATHROOMS *

BATHROOM DESCALER

Cleans and removes the most difficult dirt, and prevents limescale build-up.

- DIRECT USE
- 🚰 TAPS | SHOWER | TILES
- * 750ML



MARINE NOTES

WC GEL CLEANER

Its viscous formula adheres to the walls of the toilet bowl providing an effective and thorough cleaning against dirt and limescale.

- DIRECT USE
- 🚽 WC
- * 750ML

GENERAL HOUSEHOLD CLEANING *

WINDOW CLEANER

Removes dirt and dust from windows without leaving residue or marks, leaving a perfect finish. Fast evaporation.

- DIRECT USE
- ☐☐ WINDOWS | GLASSWARE
- * 750ML



MULTIPURPOSE



Superior cleaning power on all types of surfaces. Fast and effective cleaning wherever so required. Leaves no residue. Fast evaporation.

- DIRECT USE
- ☐ ALL SURFACE TYPES
- * 750ML

* OUR TARGET CUSTOMER

* OUR MAIN CLIENT

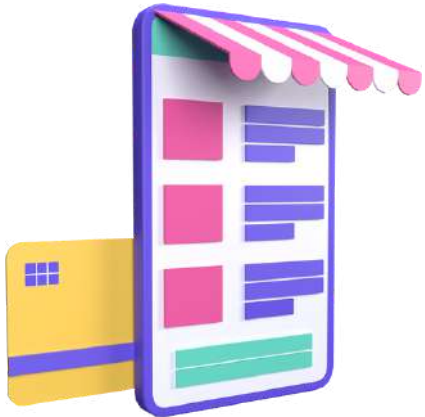


- 25 - 50 years old
- Middle class, financially well-off
- Resident in city dweller
- Lives with children or pets at home
- Interested in the environment and well-being
- Concerned about what happens in his/her surroundings
- Healthy lifestyle
- Active in new technologies and social networks

* OUR CONQUEST PLAN



OUR CONQUEST PLAN



MARKET PLACES



LARGE STORES



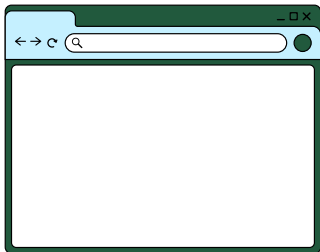
**BIO PRODUCTS
DISTRIBUTOR**



VARIETY STORES



OUR CONQUEST PLAN



**INBOUND
MARKETING
WEB**



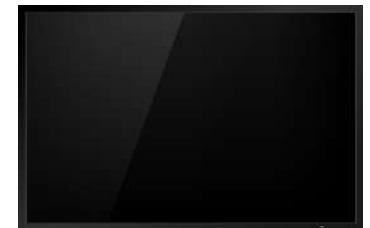
**SOCIAL MEDIA
UGC CONTENT
INFLUENCER MARKETING**



**EMAIL
MARKETING**



**VIDEO
ADVERTISING**



**TELEPROMOTION
SPOTS**



SHALL WE CHAT?

YOU'RE ONE STEP AWAY FROM LEADING A
MORE SUSTAINABLE LIFE.

ARE YOU UP TO SEEKING CHANGE?



BIOLEAF is a brand of:

VINFER LABORATORIES S.A.

Campollano Business Park C/d N°2 Phone: +34 967 52 35 01

02007 · ALBACETE · SPAIN www.vinfer.com vinfer@vinfer.com